



Expand UiPath Implementations with Appian

Enterprises today are under immense pressure to continuously deliver new digital experiences but remain burdened by legacy applications and poor technology to support agile change.

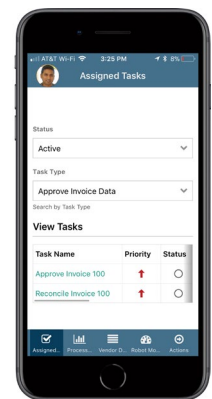
Combine Appian's leading low-code development platform with UiPath's market-defining robotic process automation platform to drive rapid digital transformation and business results.

EXTEND UIPATH RPA IMPLEMENTATIONS WITH APPIAN

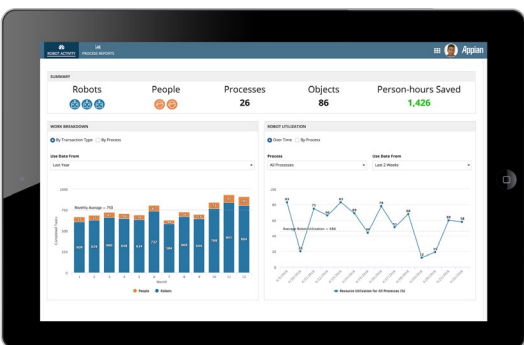
Automate human-in-the-loop tasks

Adoption of the digital workforce in enterprises is changing the landscape of office work. Increasingly, people are working alongside software robots to get work done. A productive and smart collaboration between robots and people is, therefore, a must for efficient business operations.

Exception management, reconciliations, or approvals that people perform as part of robotic process automation (RPA) processes can be fully automated using Appian's task management capabilities. Tasks are assigned to the right person, at the right time and are associated with completion time, escalations, or priority to ensure productive human-robot collaboration. A complete audit trail of all interactions provides better process visibility, compliance, and governance.



Example: Automated task management in Appian



Example: Reporting in Appian

Get greater visibility into the digital workforce

Productivity of software robots is just as important as the productivity of their human counterparts. Appian's built-in reporting capabilities provide detailed and valuable information about the digital workforce operations.

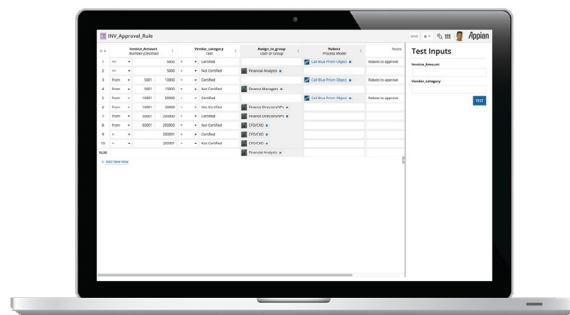
Exception, queue and utilization reports provide the insights needed to monitor and optimize digital workforce operations. In addition, process-centric reports provide complete visibility into the end-to-end process that spans across Appian and UiPath.



Simplify complex decision management and task assignment

Appian's Decision Designer simplifies the creation and maintenance of complex business rules. An intuitive, zero-code interface empowers business users to own, create, manage and change business logic.

Once defined, rules can be easily used in one or multiple RPA processes saving time and improving governance. The rule's business owner can change it at any time without requiring any changes to the related robotic processes, ensuring autonomy and agility.



Example: Decision Table in Appian



Build modern user interfaces to support robotic processes

Expand the scope of RPA by coupling robotic processes with modern user interfaces to manage human-in-the-loop activities. Appian's Interface Designer is an easy and intuitive way to build mobile-ready user interfaces without coding.

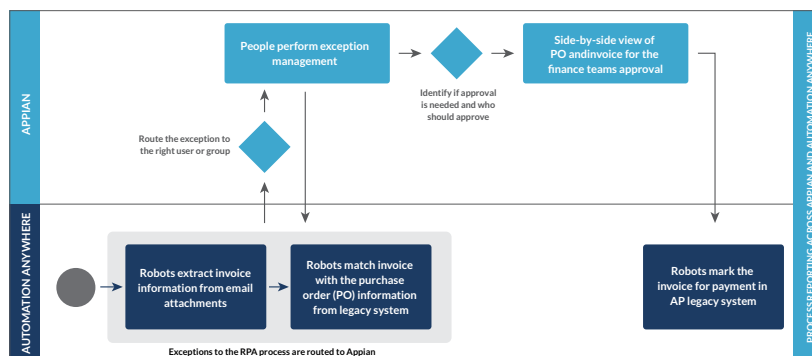
The Interface Designer allows enterprises to create and deploy any UI for any device — from simple forms to powerful applications and can be deployed as standalone apps or embedded interfaces.

End-to-end automation across robotic and business processes

Appian's process orchestration capabilities are used in conjunction with robotic processes to build end-to-end automation processes spanning across people, robots, and systems.

The complementary capabilities of the two products provide a flexible framework to automate a wide array of business operations ranging from simple processes to large-scale legacy modernization projects.

With Appian and UiPath you can automate routine tasks across your legacy and modern systems and free your workforce to drive even more value to the customer.



Example: Invoice processing using Appian and UI Path



Appian provides a low-code development platform that accelerates the creation of high-impact business applications. Many of the world's largest organizations use Appian applications to improve customer experience, achieve operational excellence, and simplify global risk management and compliance.

For more information, visit www.appian.com