

Wetwall™  
— A WILSONART COMPANY —

# The Ultimate Water-Proof Surface



**WATER-PROOF**  
WALL PANEL SYSTEM  
PATENTED TECHNOLOGY



# The Ultimate Water-Proof Surface

Wetwall is the ultimate surface for when water is ever-present. Instead of tile and grout, we developed a single panel that's water-proof. Stylish. Simple to install. And ready for everything.





100% water-proof with  
a beautiful, virtually  
seamless appearance.

BULLNOSE  
INSTALLATION

TONGUE-AND-  
GROOVE  
INSTALLATION

BULLNOSE  
INSTALLATION

Wetwall™  
A WILSONART COMPANY

# Effortless Installation and Customization

Our range of Wetwall panels gives real flexibility to shape the perfect bathroom. From the bullnose panels that do not require any additional edge treatments to the tongue-and-groove panels that can be linked together, our panels can work with most shower pans and tubs or be customized to create a spa-worthy retreat in your home.

## PANEL CONFIGURATIONS

### Bullnose Edge + Flat Edge

- The Bullnose Edge is perfect for wing wall or terminating walls.
- Available in 30", 32", 34", and 36" panel widths
- Custom sizes available upon request

### Tongue Edge + Groove Edge

- This most flexible panel is used when you want to continue the design beyond the single-panel widths.
- Available in 24" and 36" panel widths
- Custom sizes available upon request

### Tongue Edge + Flat Edge

- The easy-to-handle TE/FE panels are ideal for a seamed back wall.
- Available in 30" panel widths
- Custom sizes available upon request

### Tongue Edge + Bullnose Edge

- This Bullnose Edge combined with a TE to cap the end of the TE/GE panels.
- Available in 8" panel widths
- Custom sizes available upon request

### Groove Edge + Flat Edge

- The easy-to-handle GE/FE panels are ideal for a seamed back wall.
- Available in 30" panel widths
- Custom sizes available upon request

### Groove Edge + Bullnose Edge

- This Bullnose Edge combined with a GE to cap the end of the TE/GE panels.
- Available in 8" panel widths
- Custom sizes available upon request

### Flat Edge + Flat Edge

- The FE/FE panels are best for a one piece wall.
- Available in 34", 36", 42", 48", and 60" panel widths
- Custom sizes available upon request

### Bullnose Edge + Bullnose Edge

- With two Bullnose Edges, the ideal panel to feature behind a free-standing bathtub or a stand-alone wall.
- Available in 8", 34", 36", 42", 48", and 60" panel widths
- Custom sizes available upon request



# Features & Benefits



**FASHION & INSPIRATION**

Trend-aware designs coordinate well with popular bath finishes and materials.



**PERFORMANCE**

Patented, water-proof wall panel system withstands everyday use.



**EASY TO INSTALL**

With simple tongue-and-groove installation, the average time to install is as little as 2.5 hours.



**LOW COST OF OWNERSHIP**

Grout-free surface wipes clean with soap and a damp cloth for lasting beauty and easy maintenance.



**AVAILABILITY**

On-time delivery and reliable service you can count on.





# Performance



## ANTIMICROBIAL PROTECTION

With antimicrobial protection built directly into the surface of the shower panel, Wetwall is protected against the growth of bacteria, mold, and mildew that cause stains and odors.



## AEON™ ENHANCED SCRATCH AND SCUFF-RESISTANT PERFORMANCE TECHNOLOGY

Living with the Wetwall panel is easy, thanks to AEON™ Enhanced Scratch and Scuff-Resistant Performance Technology. AEON™ is proven to outperform other shower surfaces with similar finishes.





# Low Cost of Ownership

Because it's grout-free, it's simple to maintain and clean. Wetwall is engineered for lasting beauty and a low cost of ownership. Warm soapy water and a sponge is all that is needed for regular maintenance. Wetwall has no grout lines to clean, and is nonporous, so sealing is never required.







## Arezzo

W7041

This large-scale marble design blends light tan, warm taupe and deep brown in bold movements.



THE ULTIMATE WATER-PROOF SURFACE

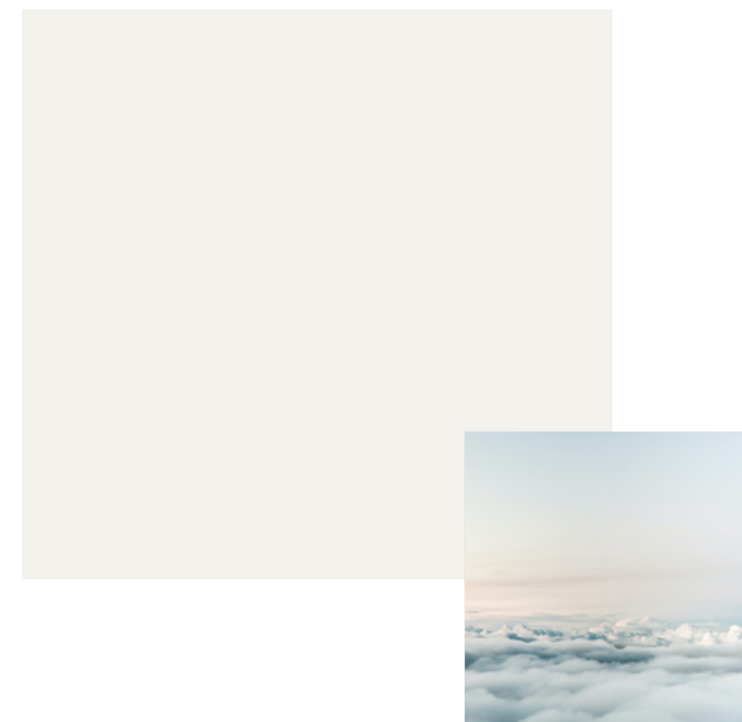


Wetwall  
— A WILSONART COMPANY —

## Aria White

W7001

Solid white color laminate design.







# Calacatta Statuario

W7036

A white marble design with varying sizes of light grey, grey and black veining,



THE ULTIMATE WATER-PROOF SURFACE



Wetwall™  
— A WILSONART COMPANY —

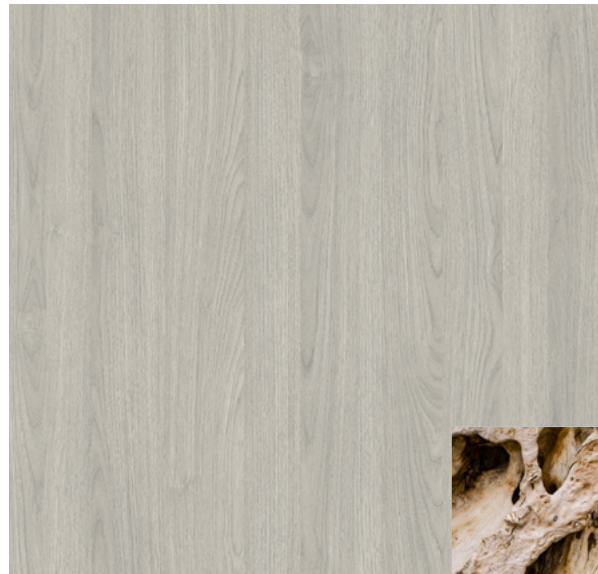


# Cosenza

W7028

Brazilian design granite featuring large-scale areas of soft white with grey and almond accents. Realism and elegance inspired from the real stone slab.





# Legacy Ash

W7042

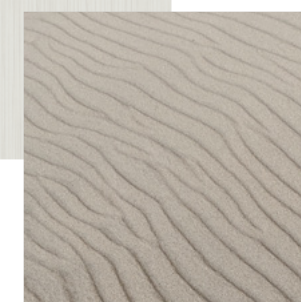
Legacy Ash is an overall light taupe woodgrain design in a subtle planked structure.



THE ULTIMATE WATER-PROOF SURFACE



Wetwall  
A WILSONART COMPANY



# Staccato

W7004

White background design with light grey converging lines.





# Tahiti Sands

W7027

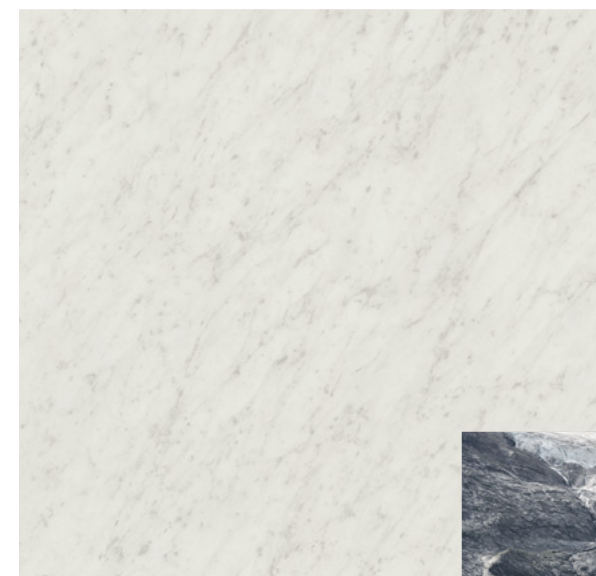
An off-white limestone look with linear directional features in subtle warm and cool neutrals.



Wetwall  
— A WILSONART COMPANY —



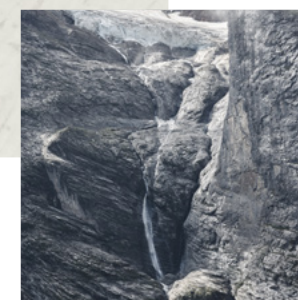
THE ULTIMATE WATER-PROOF SURFACE



# Torrone Marble

W7008

A classic Italian white marble design with a dense, low contrast, smaller grey vein structure.





Wetwall<sup>TM</sup>  
— A WILSONART COMPANY —



EXPLORE MORE AT [WETWALL.COM](https://www.wetwall.com)  
BRXXX-20